



# ORCA WIRELESS INTERLINK SMOKE ALARM



MODEL: OM866S-10RF



Certified to EN14604:2005



2797-CPR-638573

## Main Features

- Wireless Interconnection Using Radio Links (Self Learn pairing)
- 10 year Lithium Battery
- Hush Feature
- Power & Alarm Test Button
- Low Battery Warning
- Loud 85db alarm signal
- Supplied with wall plugs & screws
- Pre-warning fault signal
- Compatible with Orca Alarm Controller OM866C-10RF

This instruction leaflet contains important information on the correct installation and operation of your smoke alarm. Read this leaflet fully before attempting installation and retain for future reference.

## SPECIFICATIONS

Power Source:	3V Lithium battery
Operation Current:	<20mA operation (In Alarm)
Operation Temperature:	0°C-40°C
Ambient Humidity:	10%-90%
Horn Level:	85 Decibels at 3 metres
Max. Wireless interconnection:	30 units
Transmitting & Receiving Distance:	30-50 metres
Transmit & Receive Frequency:	868.3MHz
Battery Life:	10 years
Approval:	Certified to BS EN14604:2005

## DESCRIPTION

This smoke alarm has a built-in wireless interconnection. It can transmit and receive with other Orca wireless smoke alarms and heat alarms throughout the house. This means if a fire is detected, all alarms will activate simultaneously, giving you an audible warning no matter where you are in the house.

It is ideal for:

- living areas
- bedrooms
- hallways
- stairwells

FIGURE 1 – SINGLE STORY DWELLING

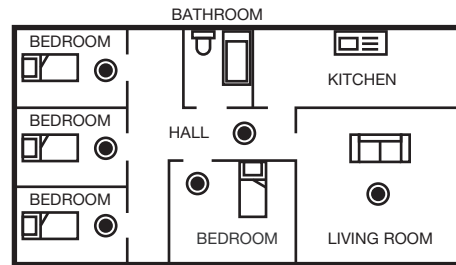
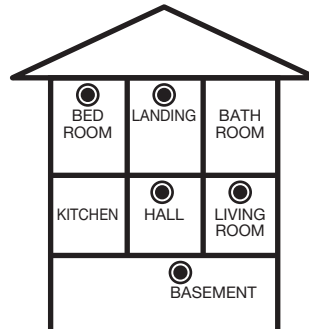


FIGURE 2 – 2/3 STORY DWELLING



This smoke alarm is interconnectable, so remember to pair it up with your other Orca wireless heat and smoke alarms (see HOME GROUPING).

## POSITIONING THE SMOKE ALARM

### Ceiling Mounting

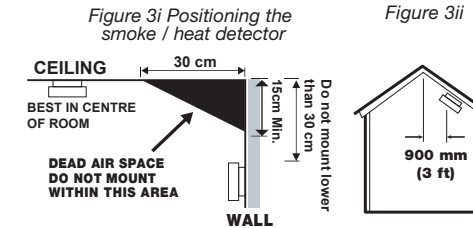
As hot smoke rises and spreads out, it is advisable to mount on a ceiling in a central position. Avoid areas where there is no air circulation, e.g. corners of rooms, and keep away from items which may prevent the free flow of air. Place the unit at least 30cm from any light fittings or decorative objects which might obstruct smoke entering the alarm. Keep at least 30cm away from walls. See Figure 3i.

### Wall Mounting

Do not mount into tight corners. Put the top edge of your smoke alarm between 15 and 30cm below the ceiling. Keep at least 30cm from room corners. See Figure 3i.

## On a Sloping Ceiling

In areas with sloping or peaked ceilings, install your smoke alarm 90cm from the highest point measured horizontally because "dead air" at the apex may prevent smoke from reaching the unit. See Figure 3ii.



If your dwelling is on a single storey, for minimum protection you should fit an alarm in the hallway between the living areas (including kitchens) and sleeping areas. Place it as near to living areas as possible and ensure the alarm is audible when the bedrooms are occupied. See Figure 1 for examples.

If your dwelling is multi-storey, for minimum protection one alarm should be fitted at the bottom of the stairs with further alarms fitted on each upstairs landing. This includes basements but excludes crawl spaces and unfinished attics. See Figure 2 for examples.

NOTE: For maximum protection, a smoke alarm should be fitted in every room (except kitchen, laundry, bathroom and garage).

### Areas to be avoided include the following:

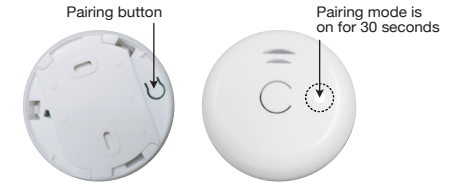
- Situations where the temperature may fall below 0°C or rise above 40°C.
- Humid areas such as bathrooms, kitchens, shower rooms where the relative humidity may exceed 90%.
- Near a decorative object, door, light fitting, window moulding etc., that may prevent smoke from entering the alarm.
- Fume filled environments such as garages. Exhaust gases may cause false alarms.
- Adjacent to or directly above hot components such as radiators or wall vents that can affect the direction of air currents.
- In very dusty or dirty environments such as garage, workshop or attic.
- Locate unit at least 1.5m away from fluorescent light fittings as electrical "noise" and/or flickering may affect the unit.
- Do not locate in insect infested areas. Insects and contamination on the smoke alarm sensor can increase its response time or cause a false alarm.

## HOME GROUPING

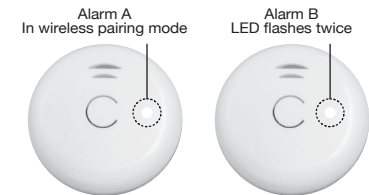
It is easiest to pair the alarms into a Home Group with all of them sitting in front of you on a table.

1. Attach the mounting plates to each alarm by turning clockwise. This will activate the batteries.
2. Select an alarm to be the "Master Alarm" and mark this on the back for later use.
3. On the "Master Alarm" press wireless pairing button and hold for 7 seconds. The LED will go RED indicating the alarm is now in pairing mode.

4. The pairing mode will remain active for 30 seconds (with the red LED illuminated) during which time you must pair the other units.



5. Select one of the unpaired alarms.
6. Press wireless pairing button **twice**. The LED will FLASH RED 5 times.
7. This alarm is now paired.
8. Repeat from step 5 for each remaining unpaired alarm.



### If the pairing mode terminates

If you don't manage to pair all your alarms within the 30 second window, just repeat from step 3 starting with the "Master Alarm".

Note: These alarms have a memory function. When they are disconnected from their power supply or turned off (i.e. for installation) they will remain joined to the Home Group.

### Pairing new alarms at a later date

If you buy a new alarm and wish to connect it to your Home Group, use this procedure:

9. You will need to take down the original "Master Alarm", together with its mounting plate, and then reattach the mounting plate to the alarm to activate the battery.
10. Then repeat from step 3 for each new alarm.

### Unpairing an alarm

Press the pairing button 5 times. The LED will flash 10 times indicating pairing is cancelled.

## MOUNTING THE SMOKE ALARM

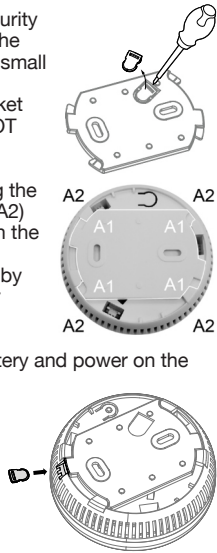
There are 2 mounting options for this alarm:

- Using the screw pack provided
- Using our Orca 40mm Magnetic Quick Mount sold separately

These instructions relate to the screw pack.

1. Establish the mounting location. See POSITIONING THE SMOKE ALARM.
2. Detach the mounting plate from the alarm and position where the alarm is to go.
3. Mark where the holes are to be drilled.
4. Drill two holes using an appropriately sized drill for the plug supplied.
5. Insert the wall plugs.

- If you want to use the security pin, remove the pin from the mounting bracket using a small flathead screwdriver.
- Screw the mounting bracket into the wall plugs. **DO NOT OVER TIGHTEN.**
- Attach the alarm to the mounting plate by aligning the two projections (A1) and (A2) on the mounting plate with the two keyhole slots in the detector. Lock in position by giving a clockwise quarter turn.
- This clockwise turn will connect the sealed-in battery and power on the alarm.
- If you are using the security pin, insert it into the slot located in the bracket.
- Test the alarm is working correctly by pressing the Test button.



### NORMAL OPERATION

In normal operation the small indicator light (LED), positioned beside the test button, should flash approximately once every minute.

Every 16 seconds or so the smoke alarm will check with other units in your home network to see if any have activated.

### WHEN AN ALARM ACTIVATES

If smoke is detected, the alarm will activate emitting loud pulsating alarm, then within 16 seconds the entire interlinked home network will activate throughout the house.

#### Here is what to do:

Firstly establish whether there is a fire or if it just a false alarm.

- You can quickly locate the alarm which triggered the system by pressing the Hush button on the nearest alarm.
- Alternatively, if you have an Alarm Controller, hold the 'LOCATE' button for half a second. The red LED on the Controller will change from flashing to a steady glow.
- Within 16 seconds, all Home Grouped alarms will stop sounding except the triggered alarm.

### IF ITS A FIRE ...

- Leave the building as quickly as possible. Check room doors for heat or smoke. Do not open a hot door. Use an alternate escape route. Crawl along the floor, if possible, breathing through a wet cloth or hold your breath. Do not stop to collect anything.
- Meet at a pre-arranged meeting place outside the dwelling and check everybody is there.
- Call the Fire Brigade from outside the building immediately. The brigade should be summoned regardless of the size of the fire and regardless of

whether there is a facility for transmission of alarms to a remote manned centre.

- Do not go back inside a burning building to wait for the Fire Brigade to arrive.

### IF ITS A FALSE ALARM ...

- Press the Hush button on the triggered alarm to silence it for 10 minutes.
- Alternatively, if you have an Alarm Controller, hold the "TEST / SILENCE" button for half a second. The red Fire Alert LED on the Alarm Controller will change to a steady glow and after 5 seconds, the triggered alarm will enter silence mode.
- All other Home Grouped alarms will stop sounding. The silence function is now active.
- Check the house carefully in case there is a small fire smouldering somewhere.
- Check whether there are some sources of smoke or fumes. You should get your family into a safe place before your investigation.
- If there are frequent nuisance/ false alarms it may be necessary to re-locate the device. If for some reasons the alarm continues to give false alarms, contact your supplier. If vacuuming the alarm does not correct the problem it can be returned to the place where you bought it.

### TESTING YOUR ALARM

It is recommended that you test your alarms once a month to ensure they are working correctly.

Press the Test button once. A loud pulsating alarm should sound to indicate it is working correctly. During the test the LED light will flash quickly.



The Test and Hush button is located on top of the smoke alarm. Press to test.

If you've been on holiday, check all your alarms when you get back.

### TESTING THE HOME NETWORK

The entire home network can easily be tested by holding down the Test button on one of the paired units for at least 16 seconds.

As units only check the home network at roughly 16 second intervals, after 16 seconds all paired units should be activating.

When you release the Test button, the other units will stop sounding within 16 seconds.

### COMMON CAUSES OF FALSE ALARMS

Smoke alarms may be triggered by steam, condensation, normal smoke or fumes. Small insects getting into the smoke alarm chamber may cause intermittent alarms.

Keep away from these sources to avoid nuisance alarms. (See "Areas to be avoided" in the "POSITIONING THE SMOKE ALARM" section.)

### HUSH OR SILENCE FEATURE

This smoke alarm has a built-in Hush or Silence feature incorporated into the Test button.

If cooking or other non-hazardous sources cause an unwanted alarm, it can be temporarily silenced by pressing the Test button and holding for approximately 1 second. The alarm will enter a dormant period for 10 minutes. The red LED will flash every 10 seconds to indicate the sensitivity is reduced. At the end of the hush period the alarm will give two short beeps, the alarm will then reset to normal sensitivity.

NOTE - If the smoke density increases during this period (i.e. from a fire) the unit will go into alarm mode.

### LOW BATTERY WARNING

If the smoke alarm emits a short 'beep' once every 40 seconds, the battery is at the end of its life and this alarm should be replaced immediately. This low voltage warning will be given for at least 30 days.

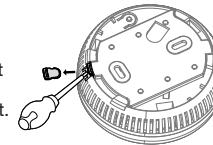
If the red indicator light (LED) does not flash every 40 seconds (normal operation) then replace the whole smoke alarm unit.

In this case, the other paired units in the home network which are not in low battery condition will chirp for a few seconds once an hour as long as the alarm with the "dead" battery beeps.

**Note: the battery cannot be replaced.**

### MAINTAINING YOUR ALARMS

Vacuum your alarms every 6 months to prevent dust build up. Firstly, remove each alarm from the ceiling. If you are using the security pin, use a small flathead screwdriver to prise out the pin. The alarm can now be rotated off the mounting bracket.



Use the brush attachment and clean gently around the front grilled section and sides. Never use water, cleaners or solvents since they may damage the alarm.

When the battery is low, replace with a new alarm.

If the alarm fails to operate correctly, please return it to your original supplier, together with proof of purchase, or contact Newfield Group.

### IMPORTANT POINTS

Installation of your smoke alarm is only one step in your safety plan. Other important steps should be taken to further improve your safety:-

- Install the smoke alarm properly, following these instructions.
- Test your smoke alarm monthly.
- Vacuum all openings on your smoke alarm 6 monthly.
- Replace with a new smoke alarm immediately once depleted.
- Do not smoke in bed.
- Keep matches and lighters away from children.
- Store flammable materials in a proper manner and never use them near naked flames or sparks.
- Maintain emergency equipment such as fire extinguishers, escape ladders etc. and ensure all

occupants know how to use them correctly.

- Plan an escape route/s from your building in advance and ensure all occupants are aware of them. Re-enforce this awareness periodically.
- Make sure escape routes remain free of any obstructions.
- A warning that batteries (battery pack or batteries installed) should not be exposed to excessive heat such as sunshine, fire or the like.

## WARNING!

**If there is any question as to the cause of an alarm, it should be assumed that the alarm is due to an actual fire and the dwelling should be evacuated immediately.**

THIS PRODUCT IS A SEALED UNIT AND CANNOT BE REPAIRED - IF THE UNIT IS TAMPERED WITH, IT WILL INVALIDATE THE WARRANTY. IF THE UNIT IS FAULTY PLEASE RETURN IT TO YOUR ORIGINAL SUPPLIER WITH YOUR PROOF OF PURCHASE.

### SMOKE ALARM LIMITED WARRANTY

This Smoke Alarm is warranted to be free from defects in materials and workmanship under normal use and service for a period of ten years (excludes battery) from date of purchase.

NEWFIELD GROUP LTD (NEWFIELD) will not be obligated to repair or replace parts which are found to be in need of repair because of misuse, damage or alterations occurring after the date of purchase.

The liability of NEWFIELD arising from the sale of this Smoke Alarm shall not in any case exceed the cost of replacement of the Smoke Alarm.

NEWFIELD shall have no liability for any personal injury or property damage, or any special incidental, contingent or consequential loss or damage of any kind resulting from a fire. The exclusive remedy for breach of the limited warranty contained herein is the repair or replacement of the defective product at NEWFIELD's option. In no case shall NEWFIELD's liability under any other remedy prescribed by law exceed the purchase price.

Send the Smoke Alarm with proof of purchase, postage and return postage prepaid, to your local supplier.

Your alarms are not a substitute for property, disability, life or other insurance of any kind. Appropriate coverage is your responsibility. Consult your insurance agent.

This does not affect your statutory rights. This alarm is only suitable for single occupancy private dwellings only and not intended for multi occupancy private dwellings or commercial or industrial dwellings.

### DISPOSAL

Waste electrical products should not be disposed of with normal household waste. Please recycle where facilities exist. Check with your Local Authority or retailer for recycling advice.

**Manufactured for  
Newfield Group Ltd  
Christchurch  
New Zealand  
03-348-0799  
www.orcasafety.co.nz**

